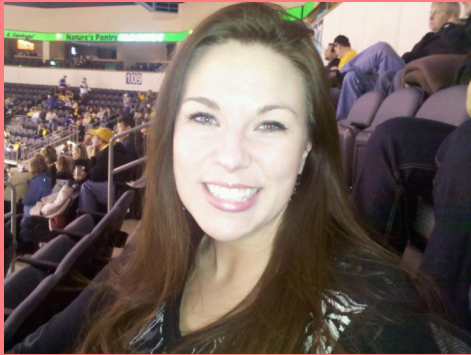


# The Plumb Lines

Volume 47, Issue 5, February 2011

Greater Kansas City, MO

## Director's Message



Is it spring yet??? Enough with the snow, already!

Luckily, Mother Nature gave us a break and didn't hinder this year's Bowling Tournament! Let's give a huge congratulations to Candice Kucharzak, this year's Bowling Committee Chair, Natalie Siegman, co-chair, Micki Basile and all of the other ladies that served on the Bowling Committee! What a great turnout we had for this fun, fabulous, fund-raising event!

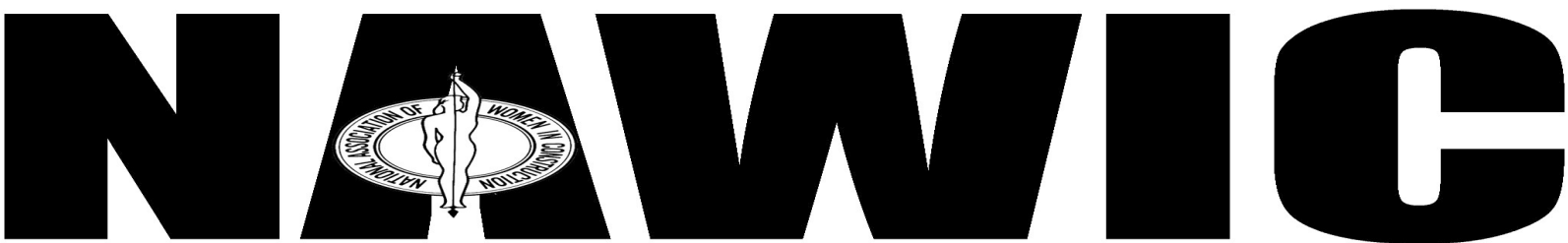
If you missed it this year, there are still other great things to get involved with in the next couple of months. Got 1<sup>st</sup> through 6<sup>th</sup> graders or know someone who does? Talk to Shannon Seipel about getting them signed up to participate in Block Kids on February 19 at the Builders Association Training Center. She'll also need volunteers to judge the projects, run the concessions booths and help with registration, so even if you don't have little ones, you can still be a part of the event.

WIC (Women In Construction) Week Celebration will be here in March, and Paula Perone is organizing our March Membership meeting to coincide with it by setting up our dinner at Harvesters. This is a wonderful way to not only meet with your NAWIC sisters for our monthly meeting, but to serve our community by donating non-perishable food items and helping Harvesters organize their food warehouse!

Some other committees that will need your help in the coming months are Construction Industry Celebration Dinner Committee (Chair - Mary McNamara), Girl Scouts Badge Committee (Chair - Jennifer Lyon), MAGIC Camp Committee (Chair Alise Martiny), Scholarship - Golf Tournament Committee (Chair - Brooke Schnurr & Vickie Nickel.) Don't really know what some of these events are about? Just ask!

Get involved, even if you just want to volunteer to help out on the day of the event. It's the absolute best way to network and form friendships with fellow NAWIC members and really have fun in our awesome organization!

**Isha-Mori Kassen**  
2010-2011 Membership Chair



Core Purpose: To Enhance the Success of Women in the Construction Industry



## President's Link

What has been going on NAWIC? Between NEF in December, the snow storm in January it has been a little while since we got to share a Monday night together! Don't fret the forecast is looking better and we have a very special membership meeting planned this month. Come let me by your valentine and let's catch up on Monday February 14 at KC Cafe!

While we may not have seen much each other in while, the chapter has been very busy behind the scenes! We have a great group of leaders and they are always looking for new and fresh ways to do things and responding to unexpected circumstances. For starters in early January we were informed Hereford House closed their doors for business and Brooke Schnurr and the Dinner/ PE committee have been busy looking for a more permanent home for meetings. We are getting close to a decision that we hope to announce in the next couple weeks. Then, Paula Perone and Karra McGreevy has been busy planning us a fantastic WIC week event at Harvesters that we plan to incorporate into our March membership meeting on March 8<sup>th</sup>. Mary McNamara and CIC committee are knees deep in bringing all the CIC plans together. Look for invitations soon. Shannon Seipel with Block kids is next week with a goal of over 100 kids. And this is just to name a few.

Our treasurer/website lady, Meredyth Melcher and I have been working hard to implement some new things. Our goal is to be able to take online payment and credit card statements by the end the year. The logistics are still being worked out and I would appreciate any feedback anyone might have on getting this going!

Also, we are working to trying to eliminate the "boxes." I am referring to the boxes of paperwork that get passed down from committee chair to chair. It is the history from all the years past. We are finding that this day and age paper is slowly being eliminated. We have had problems with boxes getting transferred from year to year. And what happens if the person responsible experiences a fire and who wants to store this box anyways? Therefore we will be moving into a digital storage system. Meredyth has already found us an online database. I am working to put a special task force together to develop this plan and procedure. I need a couple organized people to help us think through this process. Please contact me if you could help!

One last item I would like to touch on the importance of participation. This is how you truly get the value out of your membership. I need you, NAWIC needs you and we all need each other to achieve the goals and objectives of NAWIC. I am pretty much at every event. There are many of you I have not seen in a long while and not even met. Monday Membership nights can be tough, but there are plenty of other ways to help out our cause. Events and committee meetings fall a wide range of days and times. Without you, the members, our Kansas City Chapter is not possible. We have a great group of women, with many different backgrounds, so come and hang out with your NAWIC sisters!

~Brooke Eimers  
2010-2011 President



### Board of Directors 2010-2011

#### President

Brooke Eimers  
JE Dunn Construction

#### Vice President

Brooke Schnurr  
Turner Construction

#### Recording Secretary

Isha Kassen  
Luevano Hart Construction

#### Treasurer

Meredyth Melcher  
Dyllan Construction

#### President Elect

Adrian Zeiler  
The Bratton Corporation

#### Immediate Past President

Lisa Derringer  
Archer Western Contractors

#### Directors

Leigh Ann Williams  
Wagner Interior Systems  
Paula Perone  
The Waldinger Corporation  
Jennifer Lyon  
JE Dunn Construction  
Shannon Seipel  
Lafarge  
Janet Mckinney  
Barsto Construction  
Gina Carnahan  
Thomas McGee



## NAWIC KC SPOTLIGHT: Stefanie Eversgerd

**Name:** Stefanie Eversgerd **Company:** Turner Construction Co. **Title:** Assistant Project Engineer



**Brief Description of Role:** Currently I'm an Assistant Project Engineer on the Sporting Kansas City Stadium Project in Wyandotte County. I'm responsible for the engineering side of several different trades including structural steel, miscellaneous steel, structural precast, two drywall packages, two masonry packages, food service equipment, landscaping, and seating.

**What made you choose to become a member of your organization in your current role?** I interviewed with Turner my final semester of college in 2007 and I knew that it would be a perfect fit for me. The atmosphere of Kansas City Business Unit is amazing. It feels more like a small family rather than a large corporation.

**Was there any particular person or situation that inspired you to enter the construction industry?** I interned with a Construction company in St. Louis my junior year of college and this gave me first hand experience of the construction field. From that point on I knew I wanted to be out on a construction site where all the action happens!

**Who do you work more with prime contractors, subcontractors, or vendors?** I work mostly with subcontractors. I'm responsible for tracking submittals, change orders, BIM Coordination of structures, and general field items with several different trades.

**If you could go anywhere in the world, and money was no object, where would it be and what method of transportation would you choose to get there?** I've always wanted to see the pyramids in Egypt, but I don't think that will be happening any time soon. At this point in time, I would go anywhere that has a beach and some sun!



**Favorites, Hobbies, or Desires:** My two favorite hobbies are reading and dancing. I also love going to baseball games. My favorite team is the STL Cardinals and I haven't missed a KC/STL game since I moved to Kansas City in 2008.

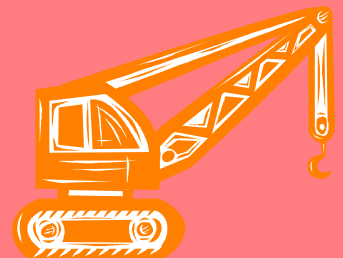
## Monthly Motivation

Excellence is not an act, but a habit. The things you do the most are the things you will do the best.

-Marva Collins

## Share your Achievements!

Kansas City we want to know what is going on in your life: births, anniversaries, promotions, job changes, etc let us know. We would love to recognize you in the plumblines. Please send all information to Stefanie Eversgerd at [seversgerd@tcco.com](mailto:seversgerd@tcco.com).



**Check Out this article on Women Entrepreneurs! [Click Here!](#)**



## ANNOUNCEMENTS FOR FEBRUARY

### Mark Your Calendars!

#### CIC Dinner

**Thursday, April 21, 2011**

Black on Burlington  
1327 Burlington  
North Kansas City MO 64116

Cocktail Hour: 5:30 PM  
Dinner: 6:30 PM  
Speaker: 7:15 PM

#### **Join us as Dr. Chris Kuehl shows us - The Humorous Side of A Down Economy**

While our down economy can sometimes seem bleak, Dr.Kuehl offers a humorous and lighthearted perspective on economic recovery in the Kansas City metro area. Dr. Kuehl is the chief economist for the National Association of Credit Managers. He serves as economic analyst for the local NBC, Fox and ABC affiliates in Kansas City as well as CNN. Dr. Kuehl also appears regularly as an economics commentator on KMBZ radio.

### It's time for the 2<sup>nd</sup> Annual Regional Safety Excellence Award Contest

Does your company excel in:

- Safety Performance
- Commitment to Safety
- Occupational Health Management
- Risk Control



You don't have to be a member of NAWIC to participate. Applications will be accepted from construction companies and construction related industry companies.

More information will be available next week.

For more information, click [HERE](#) for a Nomination Form!

### Block Kids

Saturday, February 19th @ Builders' Association  
Registration starts at 8:30 AM

Please help the committee get the word out about this great FREE event for kids!  
See attached flyer for more details.

Volunteers needed Friday afternoon for set up and Saturday for the actual event.  
We are looking for judges too!If you are available to help, please contact Shannon Seipel: [shannon.seipel@lafarge-na.com](mailto:shannon.seipel@lafarge-na.com).

Lego sorting "meeting" + goody bags will be **THIS** Thursday, February 10th @ 5:00 PM at The Builders' Association.





## ANNOUNCEMENTS FOR FEBRUARY Cont.....



### HELP Wanted!

NAWIC Special Committee  
Task Force

President Eimers needs a couple of organized people to accomplish the following:

- ◆ Plan an organization management system for all chapter files using google's digital filing database
- ◆ Develop structures for all files
- ◆ Develop Policy & Procedures for filing past and future files

### Girl Scouts—Volunteers Needed!

March 12, 2011 at the Builders' Association from 8:30 a.m. to 1:30 p.m.

We need volunteers to give the following presentation:

- ◆ Energy Savings
- ◆ Exterior Finishes
- ◆ Interior Finishes
- ◆ Construction Careers
- ◆ Floor Coverings
- ◆ Siding, Types of wood, Stain Removal from Wood



Don't worry if you don't have experience in any of these areas. We have plenty of information for you to present on. We could also use a few more volunteers to help with set-up and someone to pick up lunch. Please contact Jennifer Lyons at [Jennifer.Lyon@jedunn.com](mailto:Jennifer.Lyon@jedunn.com) for more information.

### MONTHLY MEMBERSHIP MEETING & WIC WEEK CELEBRATION SAVE THE DATE :

**Tuesday March 8th** 5:00 - 8:00 (time is flexible).

Team Builder & Community Support Event at Harvesters Community Food Network 3801 Topping Ave., Kansas City, MO 64129. We will be helping Harvesters with their BackSnack assembly line, or what ever project they need help with. Movie and tour included. Dinner & cost info TBA.



**SAVE THE DATE: APRIL 5th—Touring Sporting KC Stadium Project! More Details to Come!**

**Don't forget —You can now find us on:**

**New Website** [www.kcnawi.c.org](http://www.kcnawi.c.org)

**Twitter** Follow Us at <http://twitter.com/NAWICGreaterKC>

**Facebook** Become a Fan at <http://www.facebook.com/#!/pages/NAWIC-Gr-Kansas-City-Chapter-100/122169631135586?ref=ts>

**LinkedIn** [http://www.linkedin.com/groups?gid=2063707&trk=myg\\_ugrp\\_ovr](http://www.linkedin.com/groups?gid=2063707&trk=myg_ugrp_ovr)



## February Membership Report

We are 61 Members Strong!

### February Anniversaries

**Julie D'Agostino \* JMD Enterprises LLC \* 1 Year**  
**Jerri Whetson \* American Construction Services, LLC \* 1 Year**  
**Karra McGreevy \* Cretcher Heartland Incorporated \* 2 Years**  
**Dawna Christofferson \* Infinity Signs, Inc. \* 14 Years**

**Welcome to our newest members: Vicki L Sutcliffe with AAS Restoration, Inc.**  
**Rachel Hardman with PAR Electrical Contractors, Inc.**

Thank you ladies!

## Monthly Membership Meeting ~ Please Note Location Change

**February 14, 2011**

### KC Cafe

5:30 PM Networking  
6:00 PM Dinner  
6:30 PM Program

Program: How to sell in a down economy by NAWIC Member Shelley Armato. Click [Here](#) for More Details

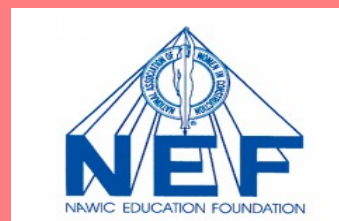
Shelley is a NAWIC Crystal Vision Award winner. She is a MBE/WBE business owner of Marathon Reprographics.

Click [Here](#) for Menu Options

RSVP deadline is Thursday February 10 , 2011 by 4:00 PM. RSVP to Brooke Schnurr @ [bschnurr@tcco.com](mailto:bschnurr@tcco.com).

## CAROL A. KUEKER CONSTRUCTION EDUCATION VISIONARY AWARD

Nomination forms are now available for the Carol A Kueker Construction Education Visionary Award. The purpose of this award is to provide recognition on a National Level to an Educator/Advocate who has a passion for and dedication to Construction Education. For more information, click [HERE](#) for a Nomination Form!



## Occupational Research and Referral.

Available online at <http://www.kcnawic.org/job-bank.htm>

### Committee Chairs 2010-2011

**CIC Dinner**  
[Mary McNamara](#)

**Girl Scouts**  
[Jennifer Lyon](#)

**MAGIC Camp & Girl Scouts**  
[Alise Martiny](#)

**Block Kids & Women Build**  
[Shannon Seipel](#)

**Professional Education & WIC Week**  
[Paula Perone](#)

**Finance Committee & Quick list**  
[Meredyth Melcher](#)

**Membership**  
[Isha Kassen](#)

**New Membership Committee & Motivational**  
[Emilee Harwell](#)

**Dinner Meeting**  
[Brooke Schnurr](#)

**National & Regional Events**  
[Candice Kucharzak](#)

**Occupational Research & Referral**  
[Tiffany Moore](#)

**Plumblines**  
[Stefanie Eversgerd](#)

**Website**  
[Meredyth Melcher](#)

**Golf Tournament**  
[Brooke Schnurr](#)  
[Vickie Nickel](#)

**Bowling Tournament**  
[Candice Kucharzak](#)  
[Natalie Siegman](#)

**Parliamentarian**  
[Janet McKinney](#)

**NEF Fundraiser**  
[Susan Farmer](#)

**By-Laws**  
[Holly Streeter-Schaefer](#)